

Project: Landslide Protection Works

Location: SOS Children's Villages Nepal, SanoThimi

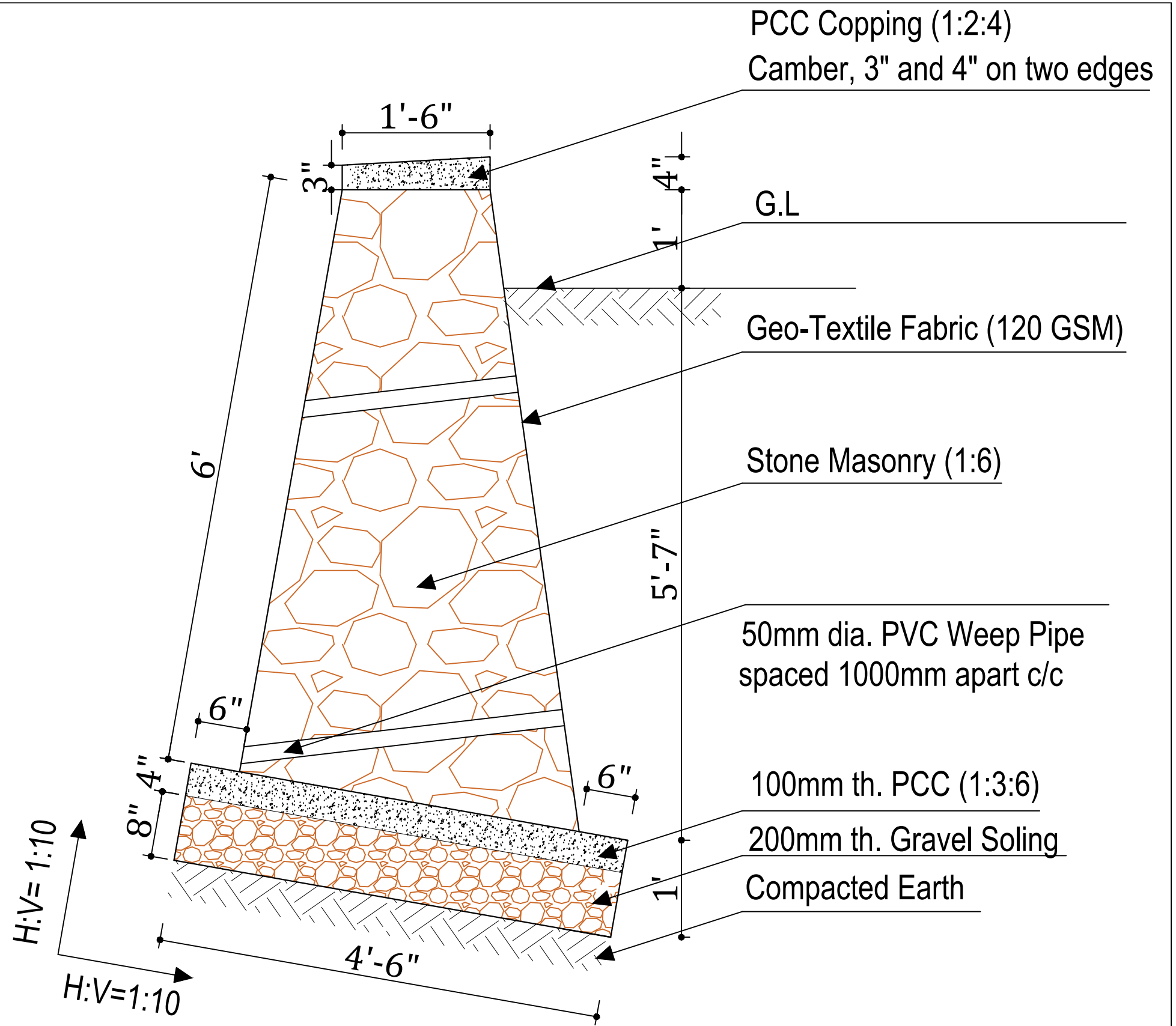
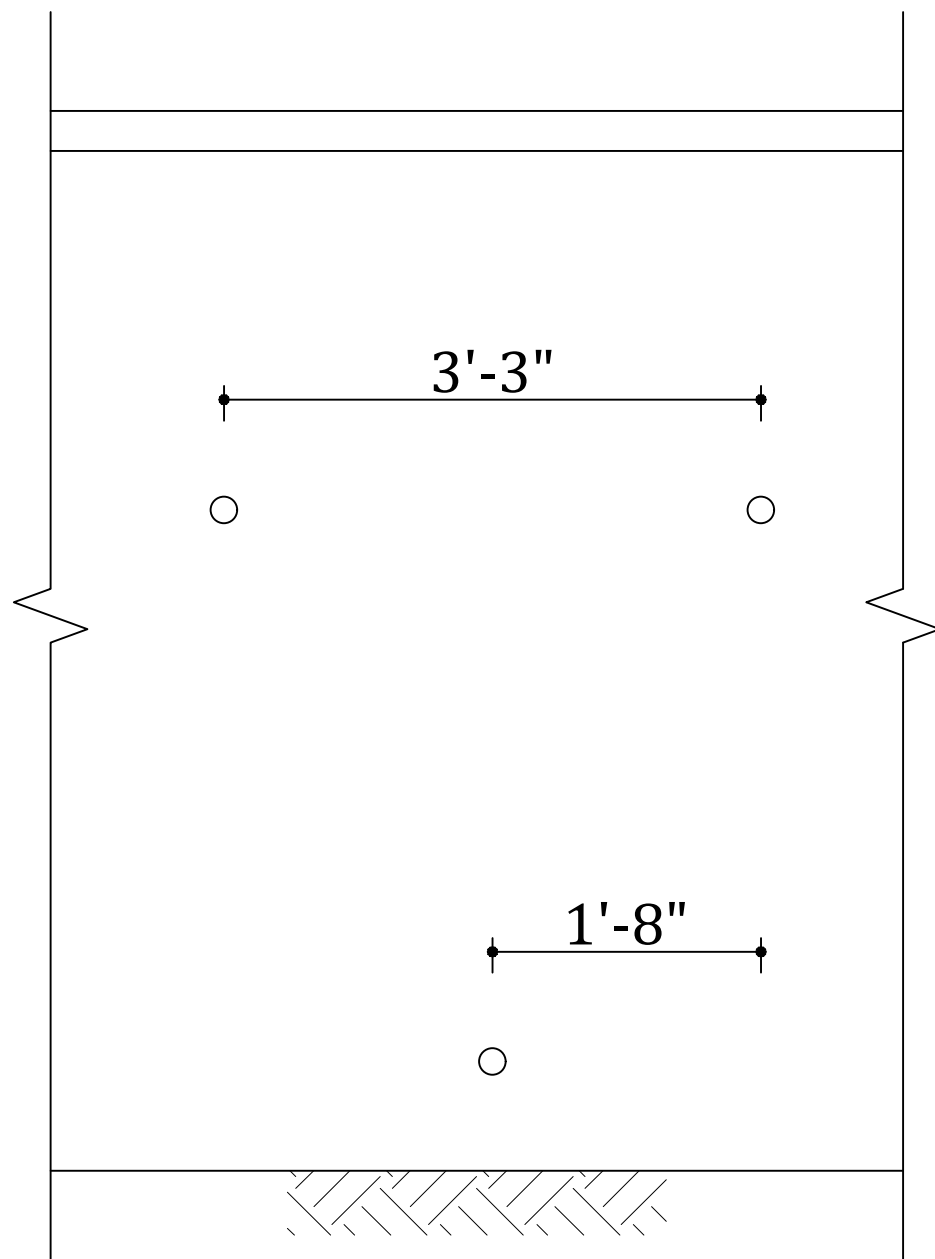
ABSTRACT OF COSTS							
S. N.	PARTICULARS	QUANTITY	UNIT	RATE IN FIGURE (NPR)	RATE IN WORDS (NPR)	AMOUNT (NPR)	REMARKS
1.0	EXCAVATION WORKS						
	Excavation in foundations in all type of soils for foundation, trenches, footing, pits etc. to the required depth including dewatering by manual means etc. as per specifications with all contractor's own machinery and equipment's, providing crossing of track, shoring, strutting, timbering and buttressing with appropriate materials and all such measures necessary to retain in position the sides of the foundation pit and including refilling the excavated material with watering, ramming, leveling the site and disposing off the surplus/unusable earth to outside the construction premises, etc. all complete as per drawings, specifications and instructions of the Engineer.	4,901.78	CU.FT.				
2.0	BACKFILLING WORKS						
	Back filling in foundation and sides of foundation with approved soil obtained from the excavation at site and stacked at site or brought from outside in layer not exceeding 15 cm thick (compacted thickness) including transportation of soil, spreading in required line and level, sprinkling water, ramming, compacting with mechanical rammers, testing, etc., all complete as per drawing, specification and instructions of the Engineer.	1,960.71	CU.FT.				
3.0	BRICK SOLING WORKS						
	Laying of chimney made bricks horizontally with sand spread in between the joints, so as to obtain flush level, all complete as per drawing, specification and instructions of the Engineer.	249.00	SQ.FT.				

4.0	SCREEDING (1:2:4 C:S:A) AND PUNNING (1:1 C:S)						
	Providing, laying in required line, level and pattern 75 mm thick IPS floor finish with cement concrete of mix 1:2:4 (1 cement : 2 sand : 4 crushed stone aggregate 12 mm and downgrade) and Punning (1:1 C: S) including mixing laying in required slope, intrical finishing using appropriate power trowelling equipment, etc. all complete as per drawing, specification and instructions of the Engineer.	249.00	SQ.FT.				
5.0	BRICK MASONRY WORKS (1:4 C:S)						
	Providing and laying first class chimney fired brick one or more brick thick wall in cement mortar 1:4 (1 cement : 4 coarse sand) in foundation up to plinth, superstructure and other specified places in all heights and level including the cost of single or multi stage scaffolding, soaking bricks, curing, raking joints, provision for recesses, openings, toothing etc., all complete as per drawing, specifications and instructions of the Engineer.	225.00	SQ.FT.				
6.0	PLASTER WORKS (1:4 C:S)						
	Providing and applying at all levels and shape 20 mm thick cement plaster in building inside in specified cement mortar with 1:4 (1 cement: 4 fine sand) cement mortar in all surface (drain) at all height including mixing mortar, laying in perfect line, level and plumb and finishing in regular and even surface including all necessary single or multi-stage scaffolding, making grooves and recesses, throating, dusting, dripping, wetting, curing, protection, all complete as per drawing , specification and instruction of the Engineer. [Rate shall also include for providing drips band, moulds, groove, chicken wire mesh at junction of RCC and masonry, etc., to complete the works at any heights].	610.50	SQ.FT.				
7.0	GEO-TEXTILE ALONG RETAINING WALL						

	Providing and Laying in position geotextile fabric (120 GSM) between the contact surface of graded gravel filter and backfill soil, all complete as per drawings, specification and instruction of the Engineer.	1,196.00	SQ.FT.				
8.0	BLACK HDPE (50mm) PIPE						
	Black HDPE pipes (50mm) to be inserted at Retaining Wall for facilitating passage for water flow .	344.00	R.FT.				
9.0	STONE MASONRY WORKS (1:6 C:S) FOR RETAINING WALL						
	Providing and laying Random Rubble stone masonry works in foundation and above plinth for Retaning Wall in 1:6 (1 cement : 6 sand) cement mortar including providing through/bond stone at required interval including providing single or multi-stage self standing scaffolding, curing, protection, etc., all complete as per drawings, specifications and instruction of the engineer.	2,520.65	CU.FT.				
10.0	POINTING WORKS (1:1 C:S)						
	Providing and applying at all levels Pointing Works in Cement Mortar 1:1 (1 cement: 1 fine sand) on the face of stone masonry wall including mixing mortar, laying in perfect line, level and plumb and finishing in regular and even surface ,all complete as per drawing , specification and instruction of the Engineer.	900.00	SQ.FT.				
11.0	GRATING						
	Providing, fabricating and installing in position, 25*23*3mm Equal Angle Sections (at both edges of drain), on top which should be provided 25*3mm MS strip spaced at 75mm c/c, including a coat of iron oxide as primer and finished with 1 coat of enamel paint, welding, rounding, jointing, finishing all complete as per drawing, spcification and instruction of the Engineer.	219.65	KG				
12.0	BOULDER SOLING WORKS						

	Providing and laying uncoursed hand packed Dry Rubble Stone soling in foundation, under floor plinth without any special dressing of stone including filling interstices with suitable quarry waste or stone chips or quarry sand, watering, compacting using appropriate mechanical compaction means with all contractors materials, handling, placing etc. all complete as per drawings, specifications and instruction of the Engineer. The complete item including all lead & lift.	435.60	CU.FT.				
13.0	PCC WORKS (1:3:6)						
	Providing and laying machine mixed Plain Cement Concrete of nominal mix 1:3:6 (1 cement : 3 sand : 6 coarse aggregate) for leveling course in foundations and under floor of building, etc. in all level with broken stone aggregate of size not more than 25 mm of approved quality including formwork wherever necessary, dewatering, batching, mixing, transporting, placing, compacting, curing, including all lead and lift, etc. all complete as per drawings, specifications and the instructions of the Engineer.	217.80	CU.FT.				
14.0	PCC COPPING (1:2:4)						
	Providing and laying machine mixed Plain Cement Concrete of nominal mix 1:2:4 (1 cement : 2 sand : 4 coarse aggregate) for leveling course on top of finished top level of stone masonry retaining walls, in proper line and level with broken stone aggregate of size not more than 25 mm of approved quality including formwork wherever necessary, dewatering, batching, mixing, transporting, placing, compacting, curing, including all lead and lift, etc. all complete as per drawings, specifications and the instructions of the Engineer.	60.90	CU.FT.				
15.0	MISCELLANEOUS						

15.1	Plumbing connections for connecting drain to manholes (2 no.s) including all material, labour, as per the instructions of the Engineer, all complete.	2.00	L.S.				
15.2	Additional backfilling (due to height difference between existing GL and top level of Retaining wall 3,4) at Retaining wall section 3, 4 with soil obtained from excavation of Retaining wall 1,2,3 and 4, considering maximum haulage distance of upto 100 metres, on (H:V= 1:3, approx.) sloping terrain, fulfilling all criteria of backfilling as mentioned under item 2.0 BACKFILLING ITEMS of this document.	511.67	CU.FT.				
15.3	Manual transportation of boulders/stone from storage point to retaining wall construction sites, considering maximum haulage distance of upto 100 metres, on (H:V= 1:3, approx.) sloping terrain.	2,956.25	CU.FT.				
TOTAL AMOUNT							NPR
ADD VAT 13%							NPR
TOTAL AMOUNT INCLUDING VAT							NPR



RETAINING WALL-1 & 2 DETAIL (H= 6'-0")

Scale=1:40

Note: Provide Joint @5m interval

PCC Copping (1:2:4)
Camber, 3" and 4" on two edges

New G.L after backfilling

Geo-Textile Fabric (120 GSM)

Stone Masonry (1:6)

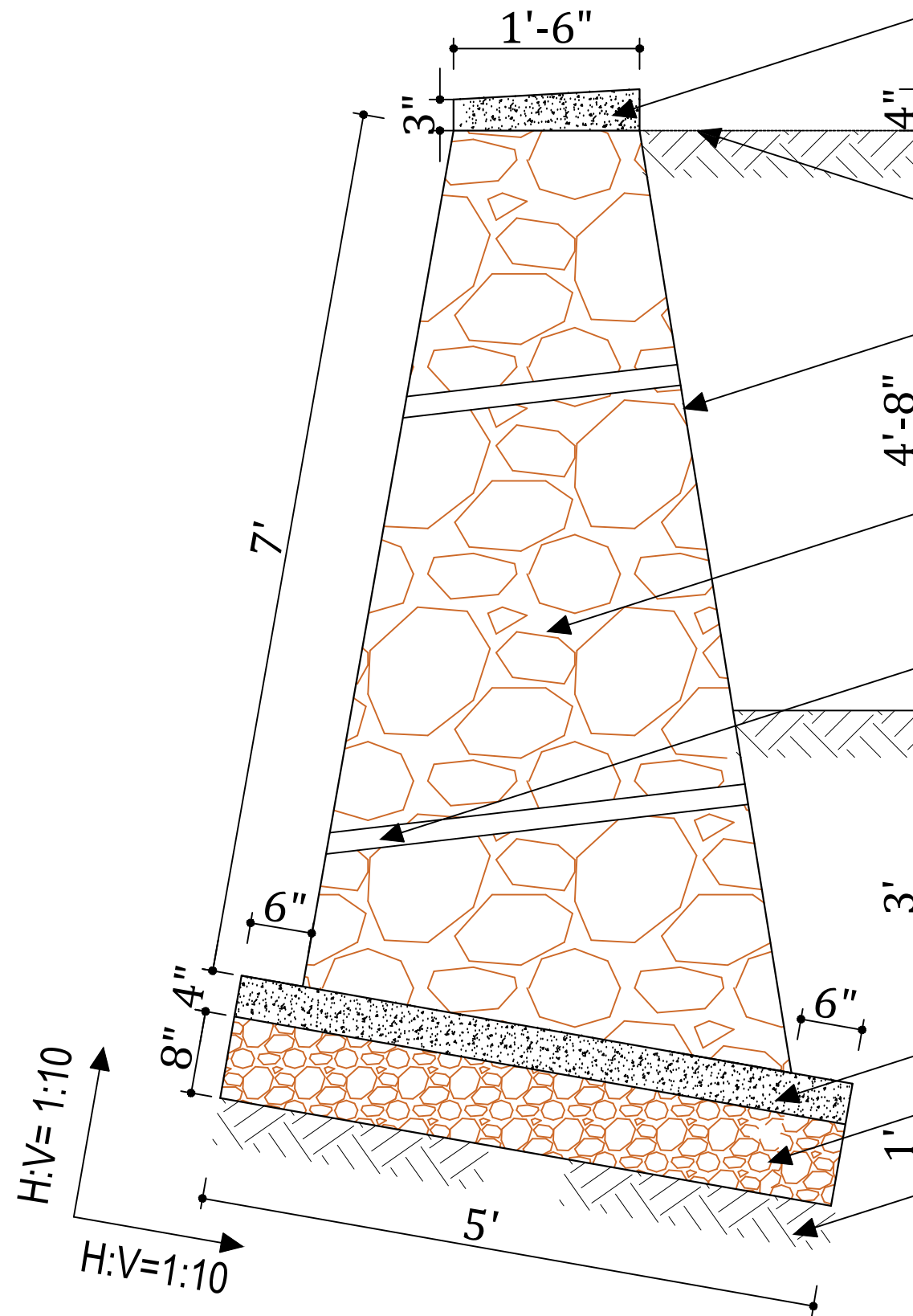
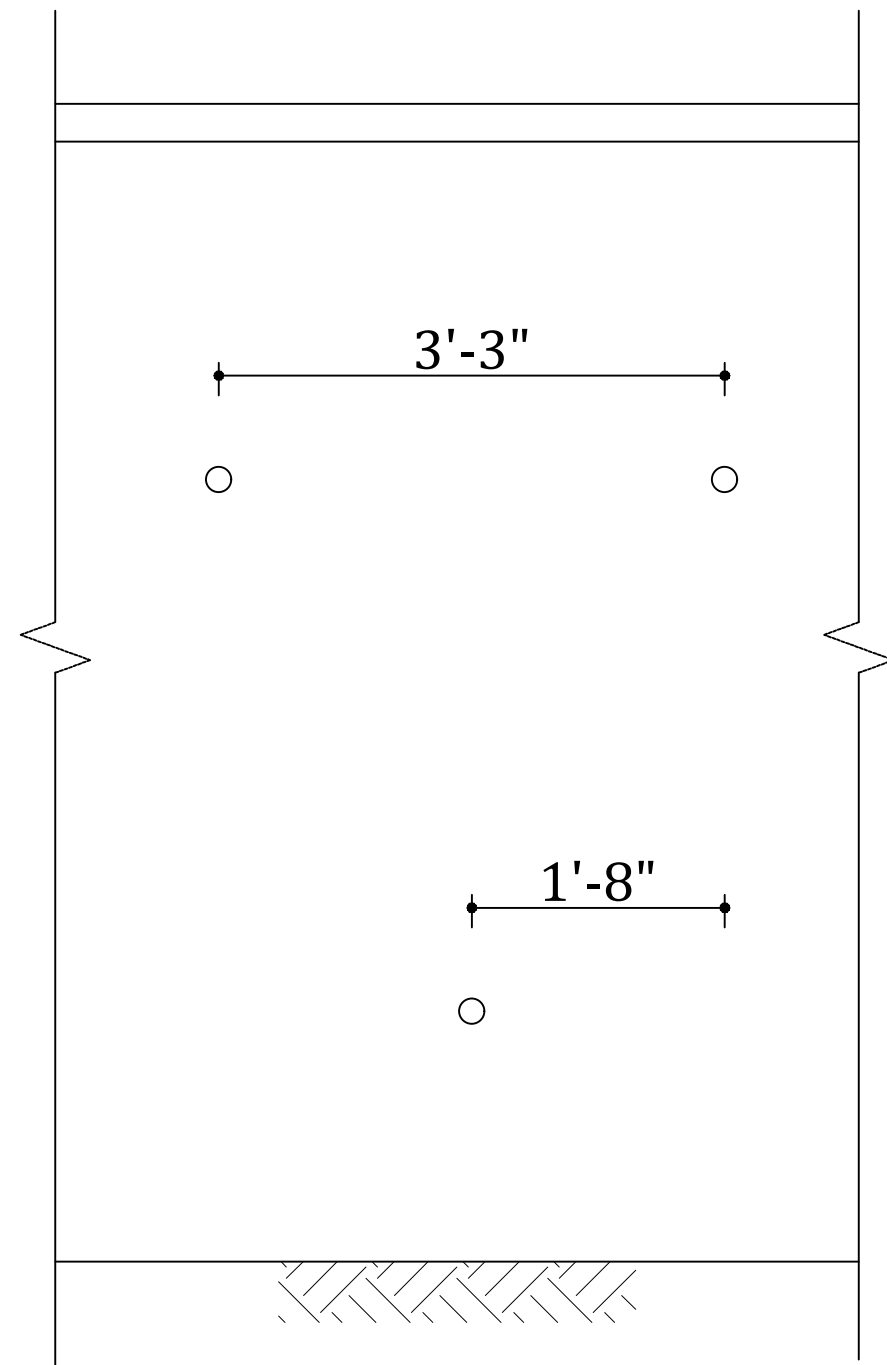
50mm dia. PVC Weep Pipe
spaced 1000mm apart c/c

Existing G.L

100mm th. PCC (1:3:6)

200mm th. Gravel Soling

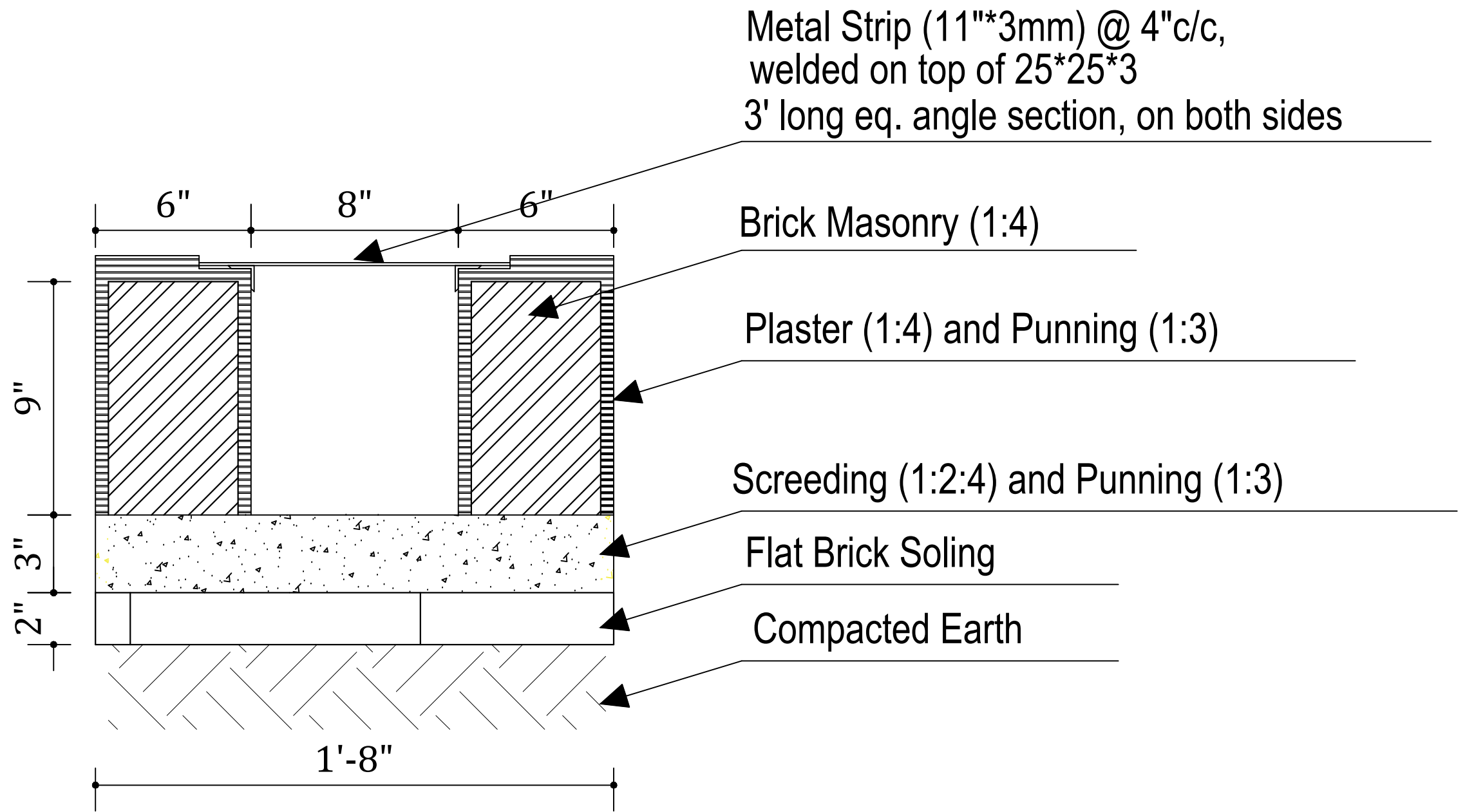
Compacted Earth



RETAINING WALL-3 & 4 DETAIL (H= 7'-0")

Scale=1:40

Note: Provide Joint @5m interval



DRAIN SECTION WITH METAL GRATING (SECTION)

Scale=1:40