



FIG.1.14: PICTURE OF EXISTING TILE AND TILE LAYOUT
(AVG. L=1'-0"-1'-3", AVG. B= 0'-10"-1'-0")
(NOT TO SCALE)

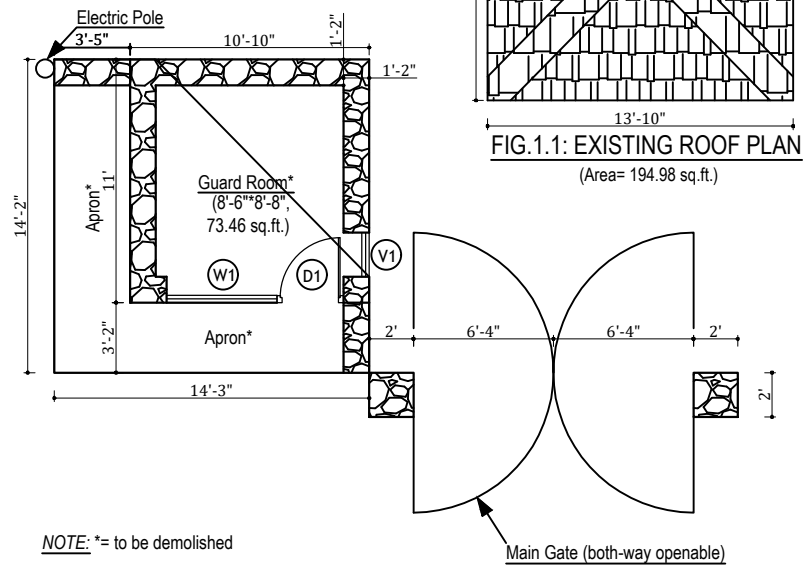


FIG.1.1: EXISTING ROOF PLAN
(Area= 194.98 sq.ft.)

NOTE: * = to be demolished

FIG.1.2: EXISTING FLOOR PLAN
(Area= 118.91 sq.ft.)

EXISTING OPENING SCHEDULE:

S.N	DESCRIPTION	SIZE	NOS.	SILL LVL.	REMARKS
1.0	D1 (ROOM DOOR)	3'-0" X 7'-8"	1	-	
2.0	W1 (Window)	3'-0" X 5'-0"	1	-	
3.0	V1 (VENTILATION)	1'-6" X 3'-0"	1	-	
	TOTAL		3		

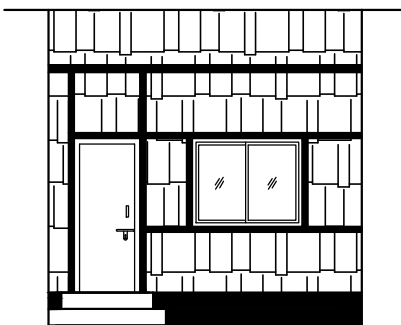


FIG.1.7: SOUTH ELEVATION

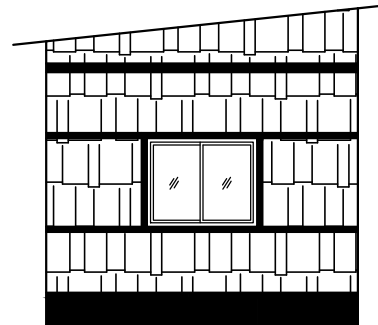


FIG.1.8: WEST ELEVATION

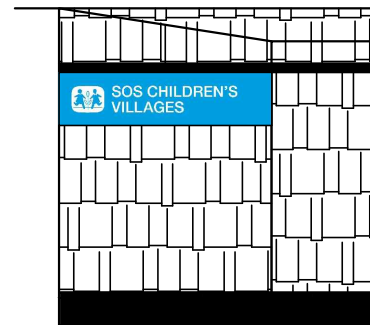


FIG.1.9: NORTH ELEVATION



FIG.1.10: EAST ELEVATION

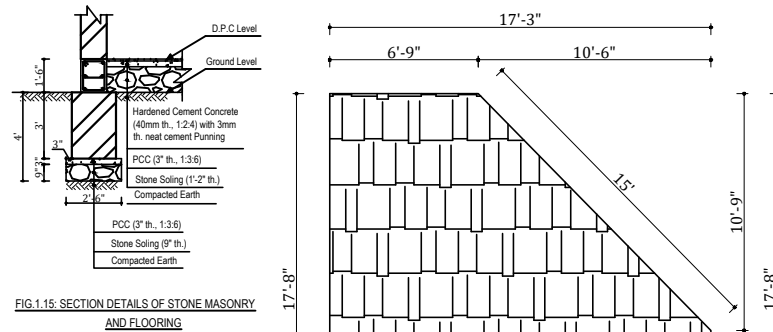


FIG.1.15: SECTION DETAILS OF STONE MASONRY AND FLOORING

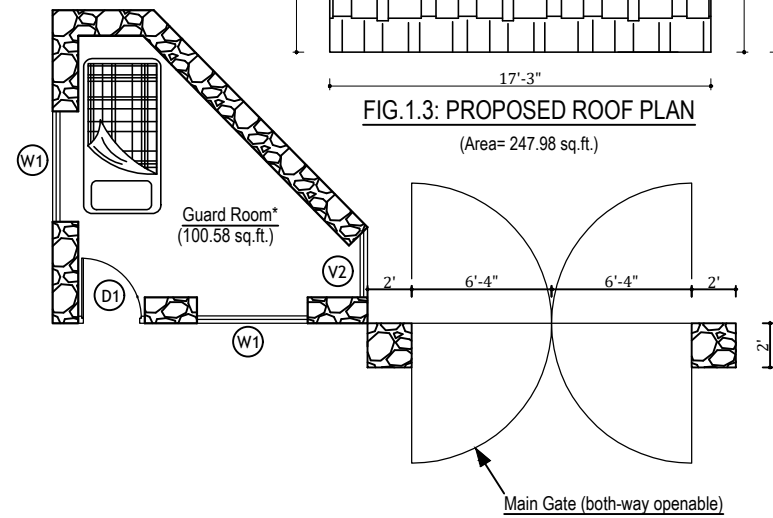


FIG.1.3: PROPOSED ROOF PLAN
(Area= 247.98 sq.ft.)

FIG.1.4: PROPOSED FLOOR PLAN
(Area= 154.12 sq.ft.)

PROPOSED OPENING SCHEDULE:

S.N	DESCRIPTION	SIZE	NOS.	SILL LVL.	REMARKS
1.0	D1 (ROOM DOOR)	3'-0" X 7'-0"	1	-	
2.0	W1 (Window)	5'-0" X 4'-0"	2	3'-0"	
3.0	W2 (Window)	3'-2" X 4'-0"	1	3'-0"	
	TOTAL		3		

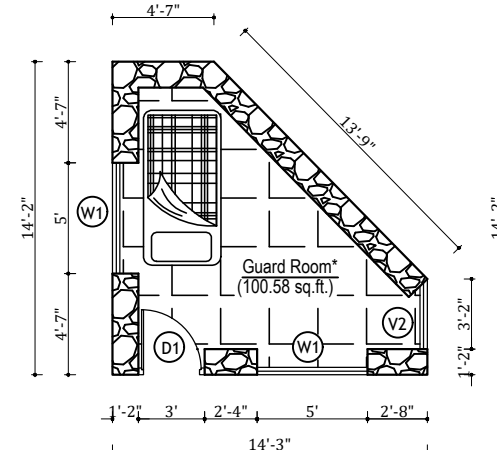


FIG.1.5: GROUND FLOOR PLAN
(Area= 154.12 sq.ft.)

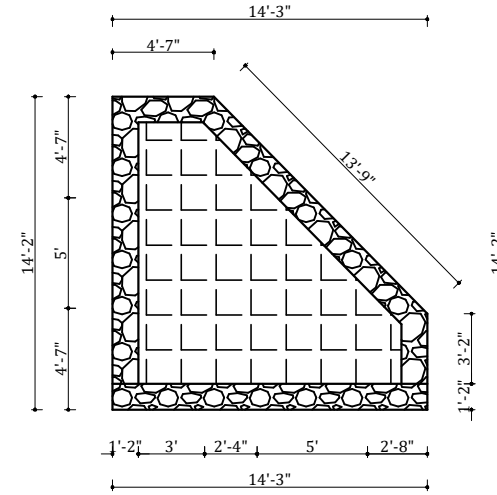


FIG.1.6: TERRACE PLAN

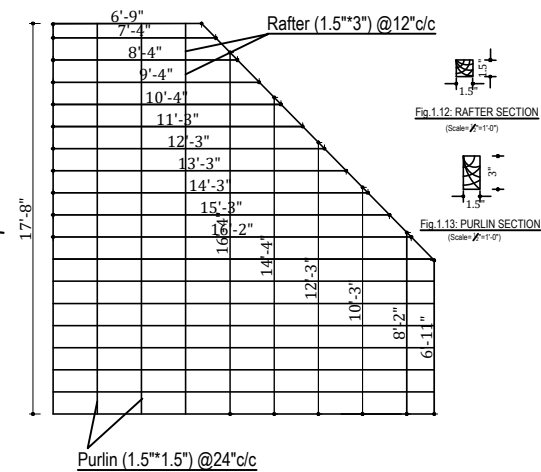


Fig.1.11: RAFTER and PURLIN LAYOUT
(Area= 247.98 sq.ft.)



- NOTES:
1. Any discrepancy in the drawing to be immediately reported to the consultant or concerned engineer.
 2. Drawing are not to be directly measured.
 3. Read this drawing along with other related drawings and coordinate with Structural, Electrical, Plumbing and other services drawings.
 4. All the units are in feet, unless mentioned otherwise.



Official Stamp:

Project Title:
Renovation Works at SOS
CHILDREN'S VILLAGE Gandaki

Work Type:
Renovation

Location:
SOS CHILDREN'S VILLAGE
GANDAKI, Rambazar-15

Print Sheet:
A3 size

Scale:
1" = 8'-0"

Date:
September,
2024

P-01